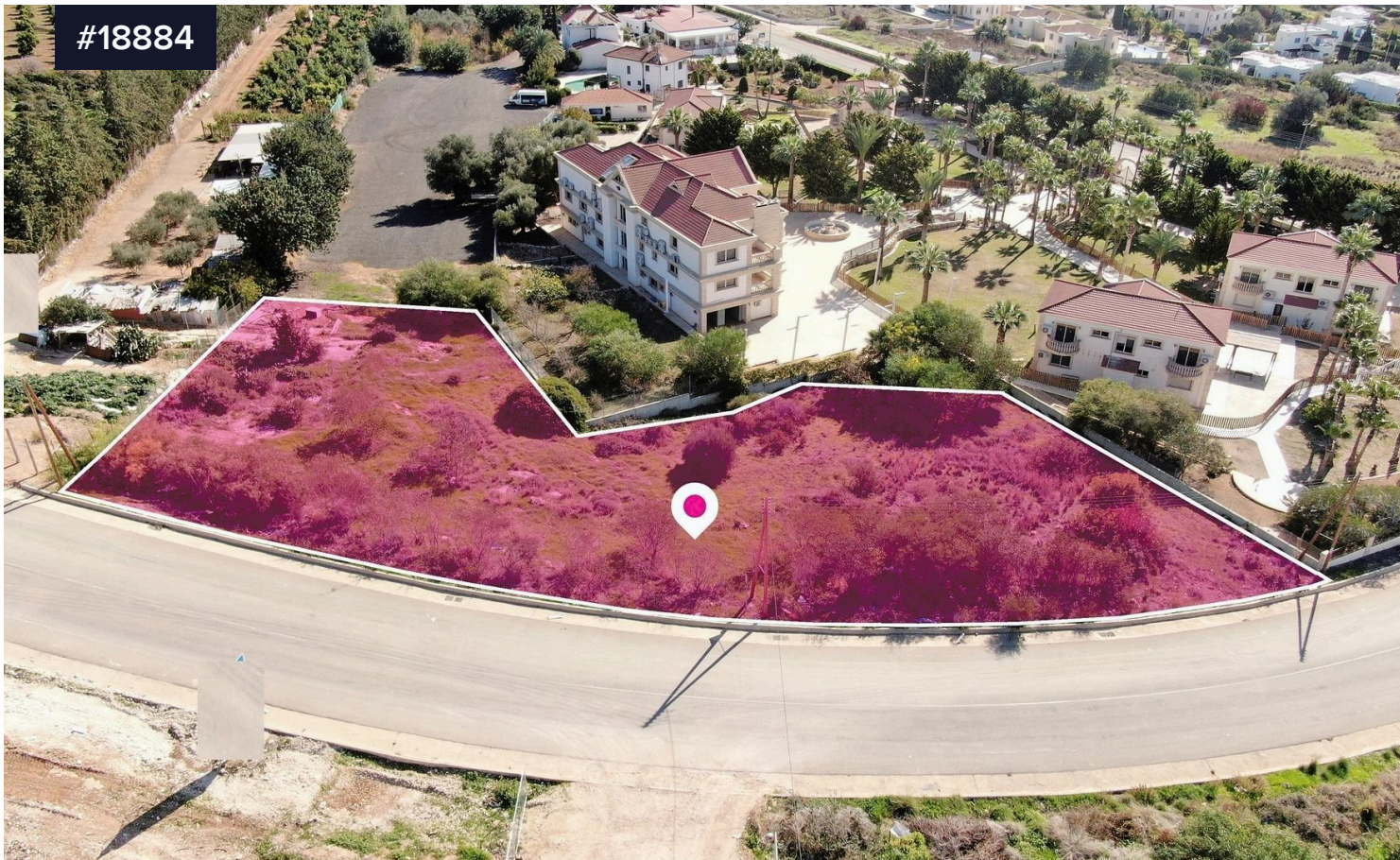


#18884



## Residential field in Peyia Municipality, Paphos

€250,000 <sup>+VAT</sup>

 Peyia, Paphos

Area

 2436 m<sup>2</sup>

Type

Field

Residential sea view field of total area 2,436sq.m located at Peyia, in the district of Paphos.

It has an irregular shape with frontage of 80m and a partially sloping surface .

It abuts onto a registered paved road and is located next to a private school.

It is noted that the property is subject to an intervention along its eastern boundary by an adjacent property.

