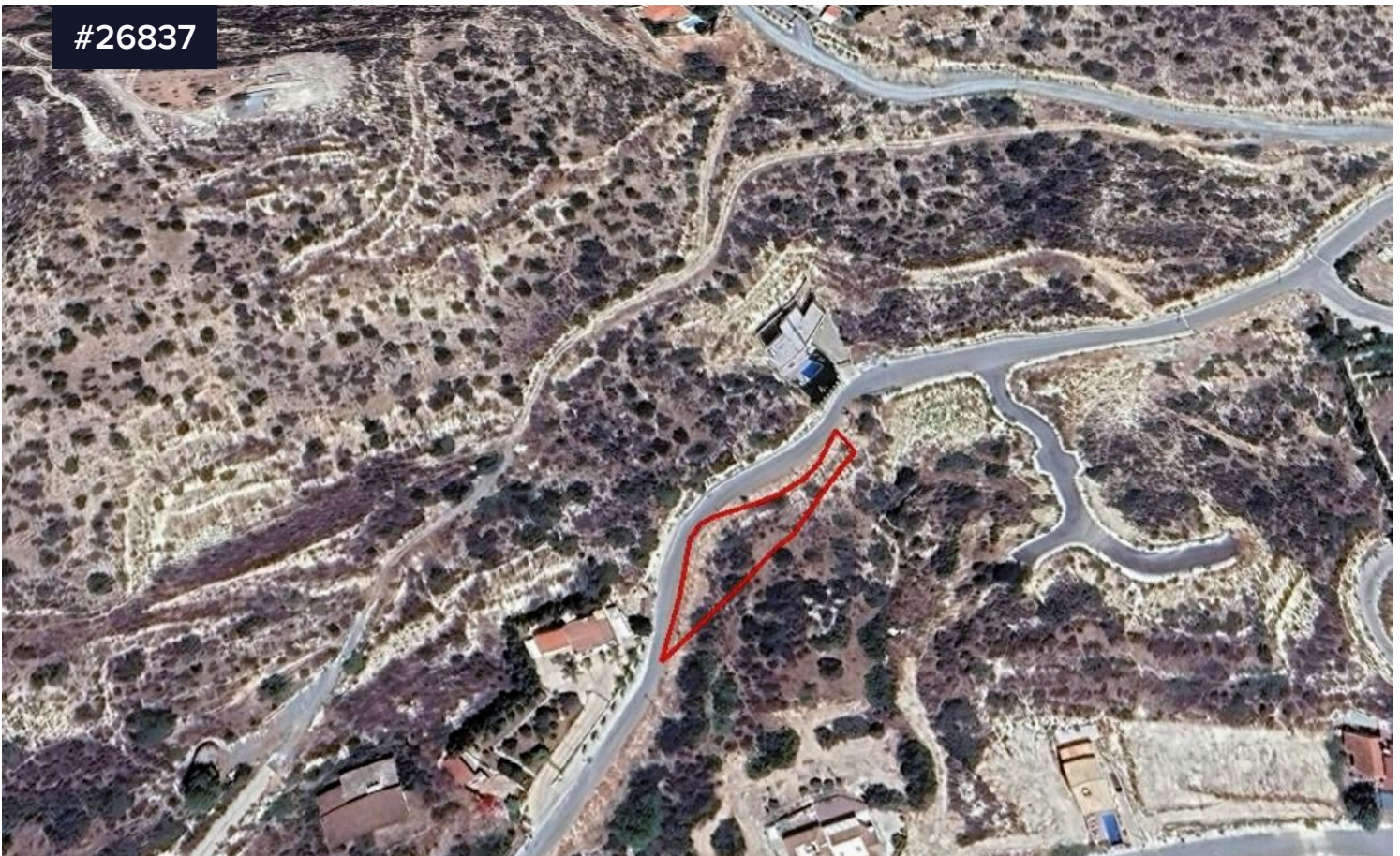


#26837



Residential Field for sale in Palodeia, Limassol

€170,000

 Palodeia, Limassol

Area

 945 m²

A corner field of 945 sq.m., classified as H3 (3%) & H4 (97%), allowing for the construction of approximately 380 sq.m. of covered areas. This field offers easy access to water and electricity and provides charming views of the village. Conveniently located just 15 minutes from Limassol Center, 10 minutes from main roads, and 1 km from local amenities and bus stops, it is an excellent opportunity for residential development in a peaceful village setting.

Type

Field

Title deed

Yes

