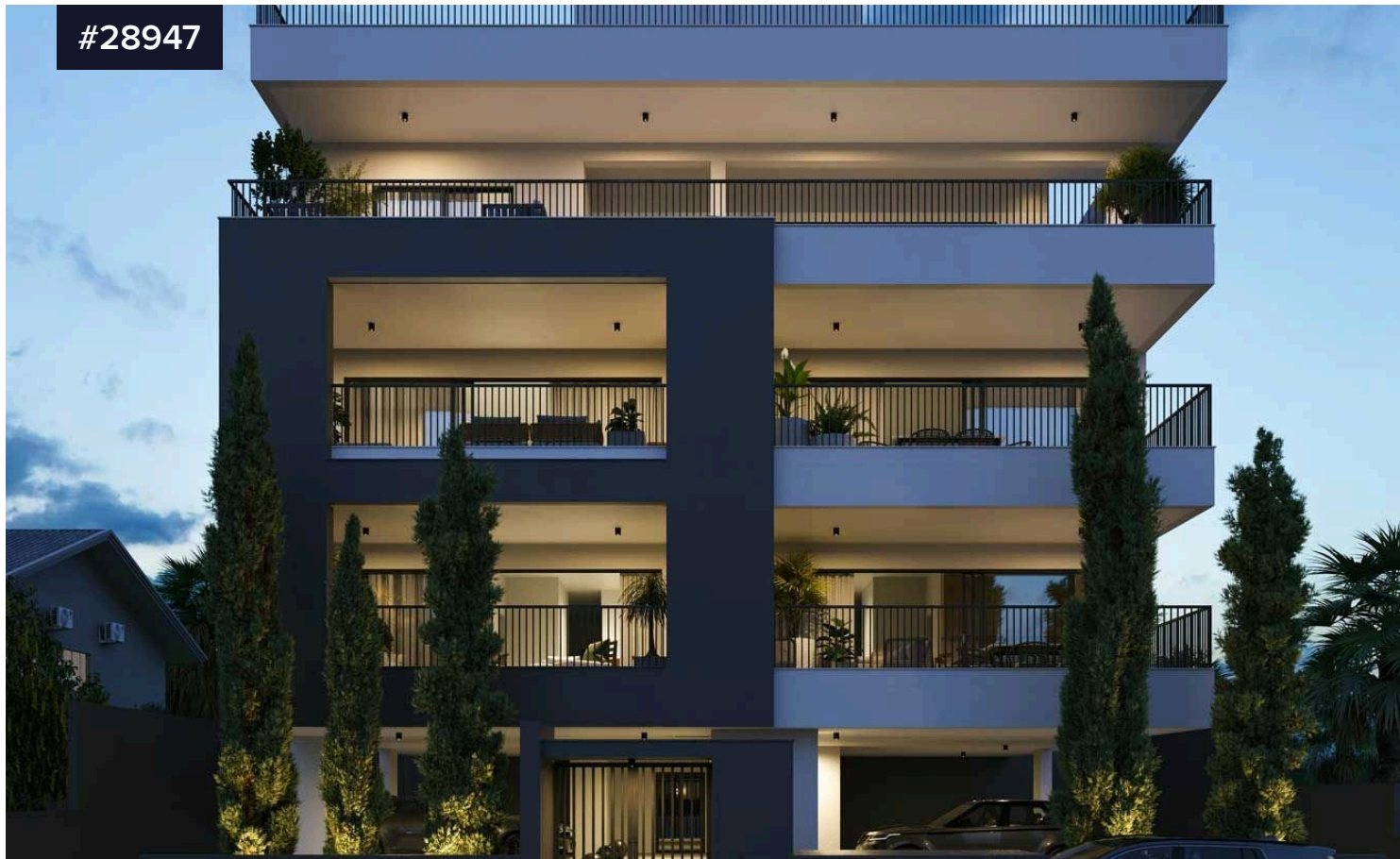


#28947



For Sale 2 Bedroom Apartment in Panthea

€385,000 ^{+VAT}

 Panthea, Limassol

Bedrooms

 2

Bathrooms

 2

Total covered area

 86.9 m²

Type

Apartment

Status

Under construction

Energy efficiency rating

 A

This is a fantastic opportunity to purchase a modern apartment currently under construction in the desirable Panthea area. Spanning an internal space of 86.9 m², this thoughtfully designed apartment features 2 spacious bedrooms and 2 well-appointed bathrooms, making it perfect for families or professionals seeking comfort and convenience.

Situated on the first floor of a three-story building, residents will enjoy easy access via an elevator. The apartment is designed with energy

