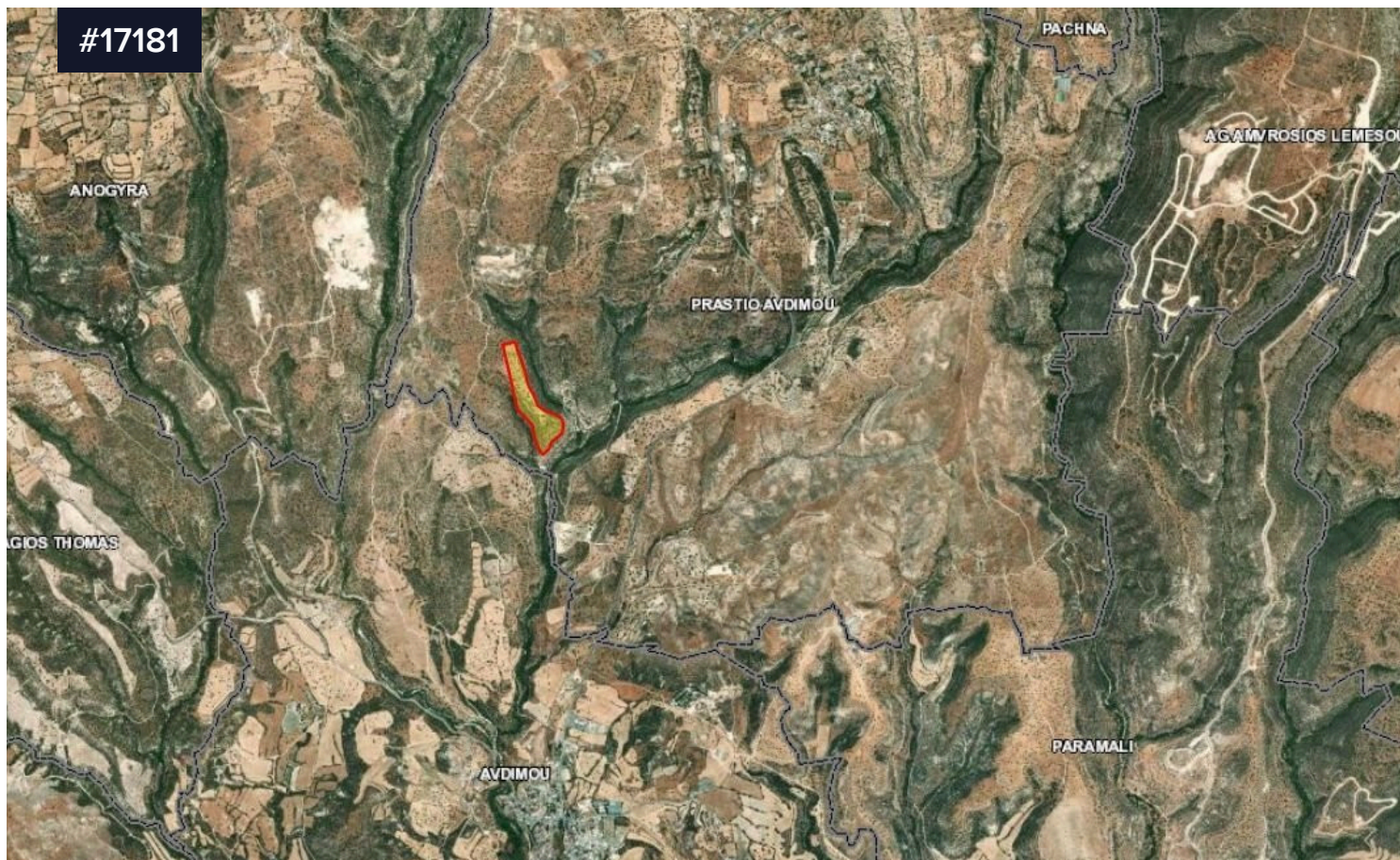


#17181



## LAND FOR SALE

€400,000

📍 Prastio Avdimou, Limassol

Area

📏 62877 m<sup>2</sup>

Type

Field

Title deed

Yes

Land for sale 62877 square meters in the village of Prastio Avdimou.

Main characteristics:

- Next to residential zoning with electricity network
- Easy access to nearby villages and 100M away from main road to Limassol & Paphos

Nearby landmarks:

Waterfall of Prasteio Avdimou: 1KM

Golf course: 5KM

Beach: 6KM

