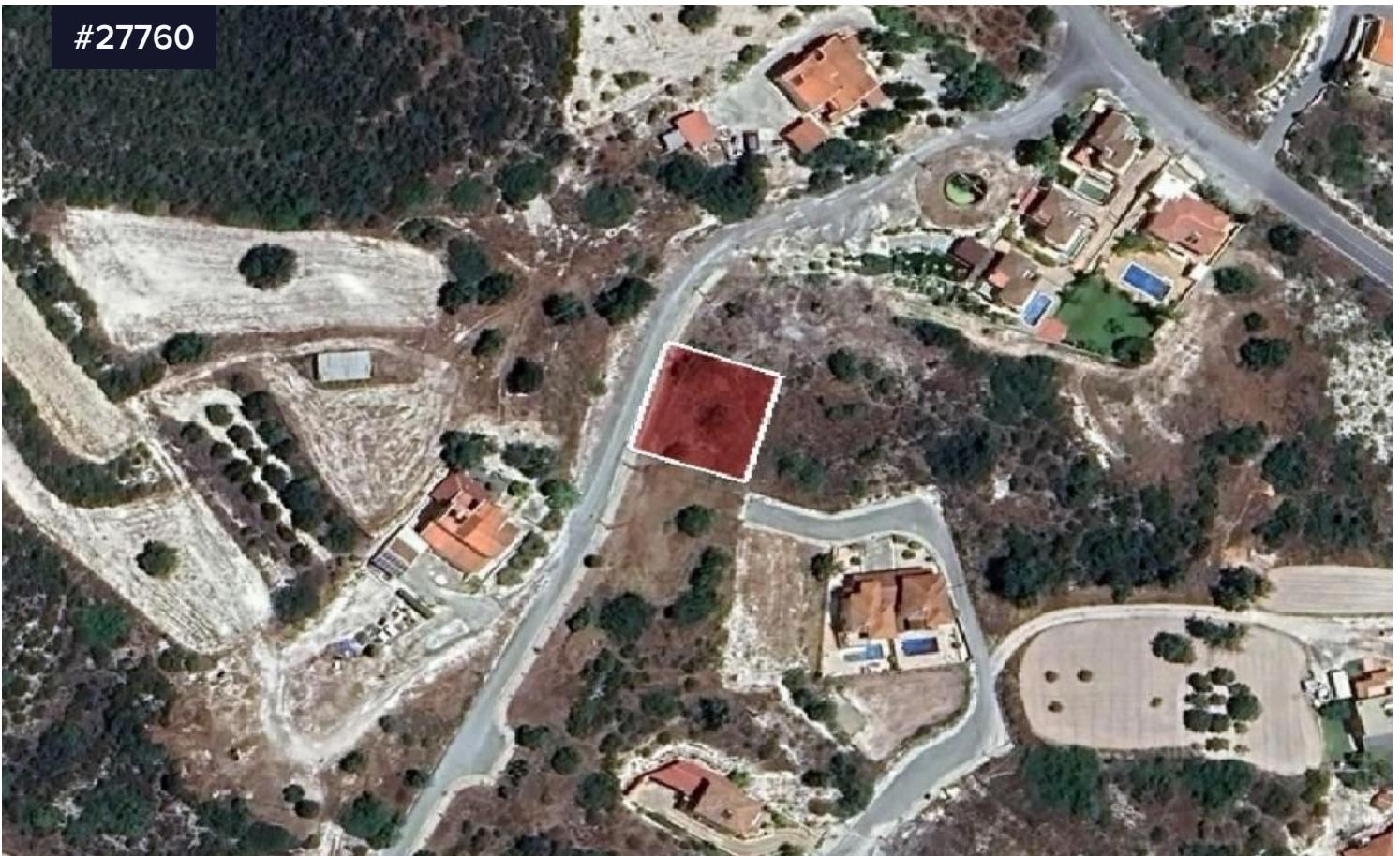



#27760



Residential land for sale in Pissouri, Limassol

€73,000 ^{+VAT}

 Pissouri, Limassol

Area

 642 m²

Residential plot in Pissouri village of Limassol district. It is situated at a distance approximately 930 meters northwest of the community center and approximately 450 meters south of Limassol - Paphos highway.

It has a regular shape with an inclined surface and it abuts onto a public registered road along its western boundary with frontage of approximately 25 meters.

The property falls within the Residential Zone H5, having a building density of 30%.

Type

Field

Title deed

Yes

