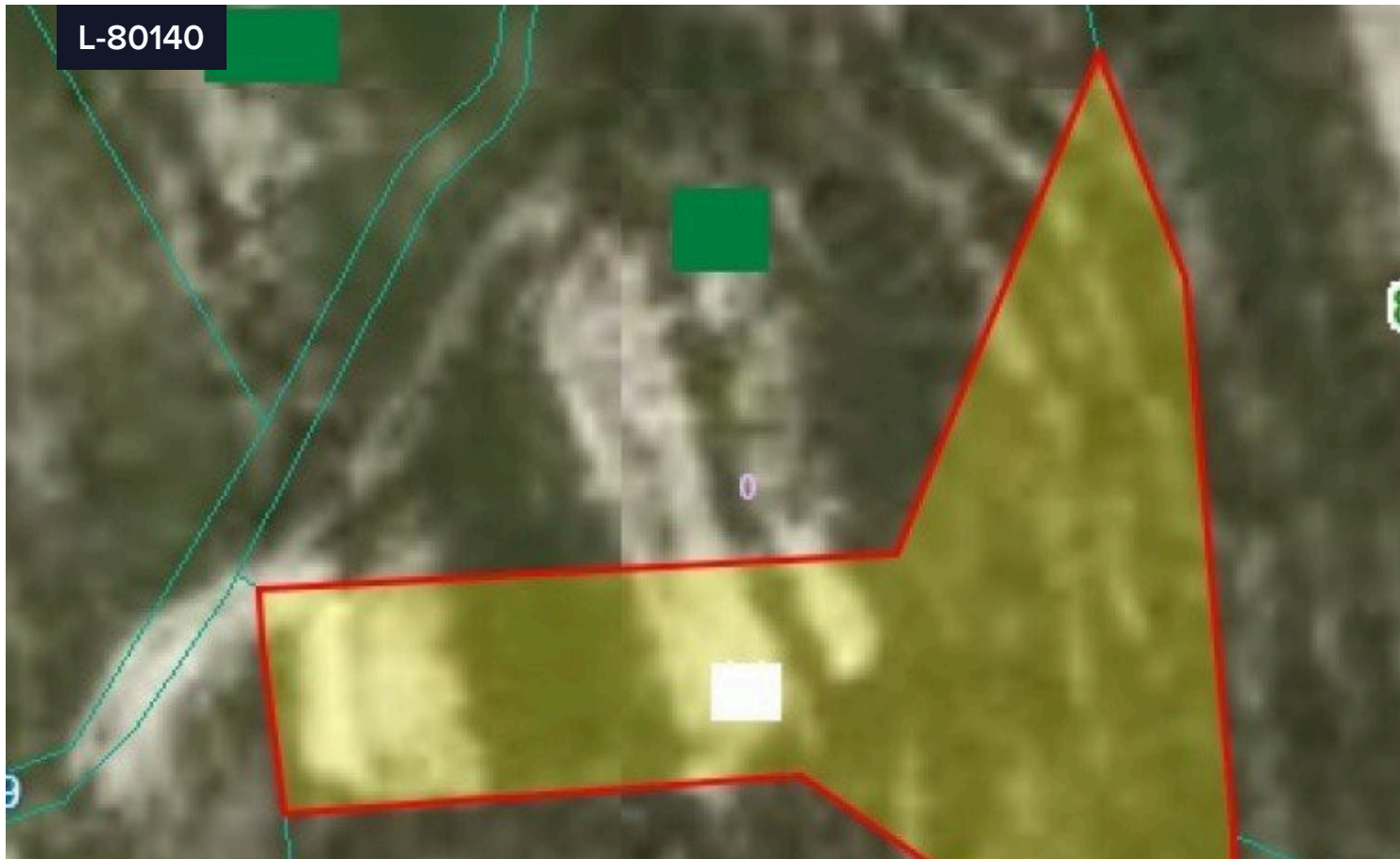


L-80140



Land For Sale In Koilani Limassol Cyprus

€37,500

 Koilani, Limassol

Area

 2007 m²

Land of 2007sqm, coverage ratio 10%, building density 10% and permissible no. of floors 2, in Koilani village witch is located in the mountains above Limassol. It is one of the wine villages and has a rich historical tradition and cultural heritage. The name of the village comes from the ancient city of Kyllene in the Greek Peloponese. It is from there that the first inhabitants of the village came. Please contact us for more information.

Type

Field

Title deed

Yes

