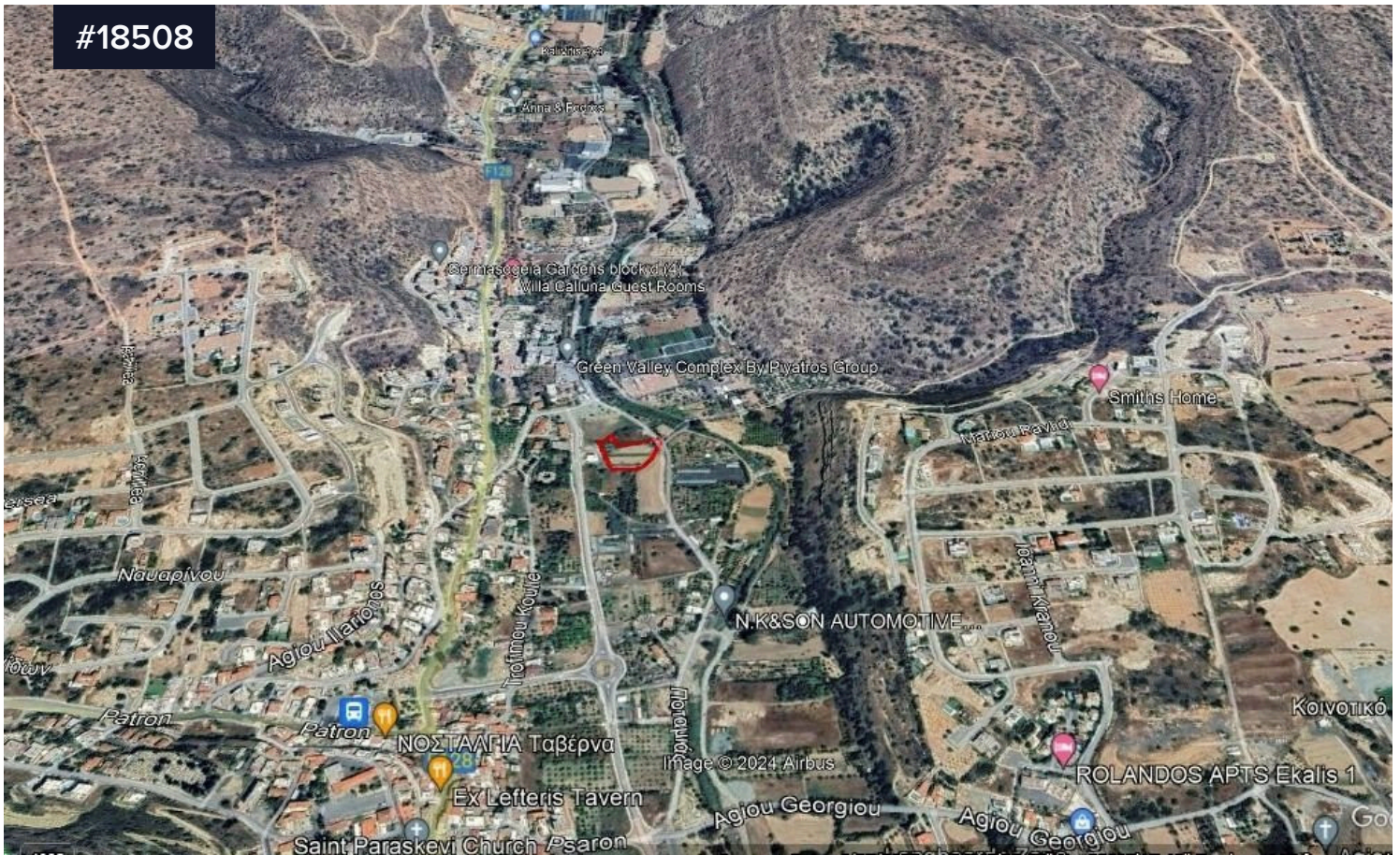


#18508



## 3304sq.m. Prime Land in Germasogeia | Residential and Nature Zones | Unobstructed Views

€850,000

 Germasogeia, Limassol

Area

 3304 m<sup>2</sup>

Explore the potential of this expansive 3304sq.m. land situated in Germasogeia, offering a unique blend of residential and protected nature zones. Nestled in the valley, this prime parcel ensures unobstructed views and the promise of well-designed constructions. Accessible via a public road, it resides in the charming village of Germasogeia, just a short 7-minute drive from the beach. Unlock possibilities for a picturesque and harmonious development in this sought-after location.

Type

Field

Title deed

Yes

