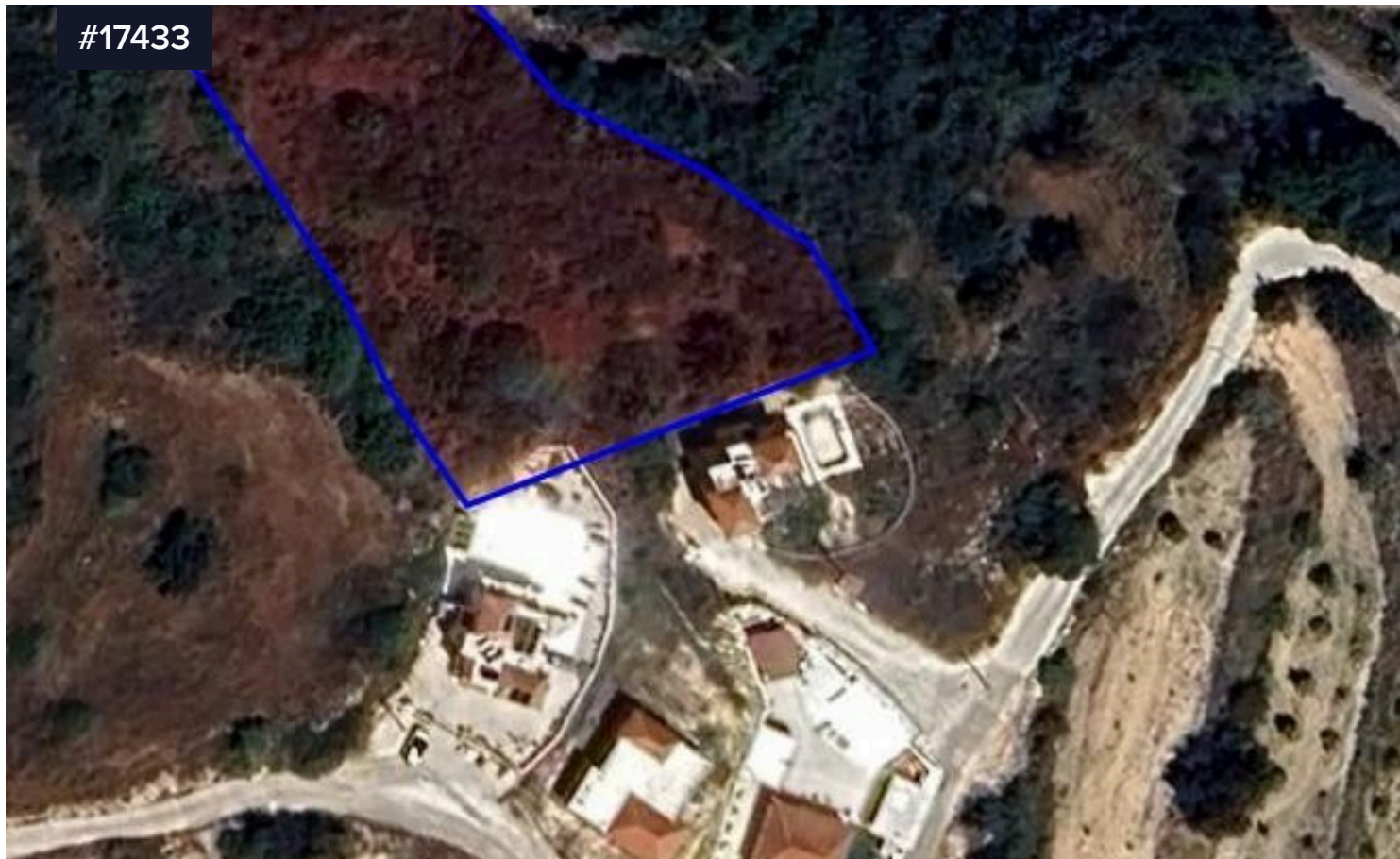


#17433



## Residential land in Skoulli village, Paphos

€80,000

 Skoulli, Paphos

Area

 2675 m<sup>2</sup>

Type

Development Land

Title deed

Yes

For sale residential land in Skoulli village in Paphos.

The land falls into the residential zone H2 with building density 90%, coverage ratio 50%, max height 8.3 m and maximum 2 floors.

It is about 40 m from a register road and it is consider as landlocked.

For further information please contact us.

\*The price may be subject to VAT\*

