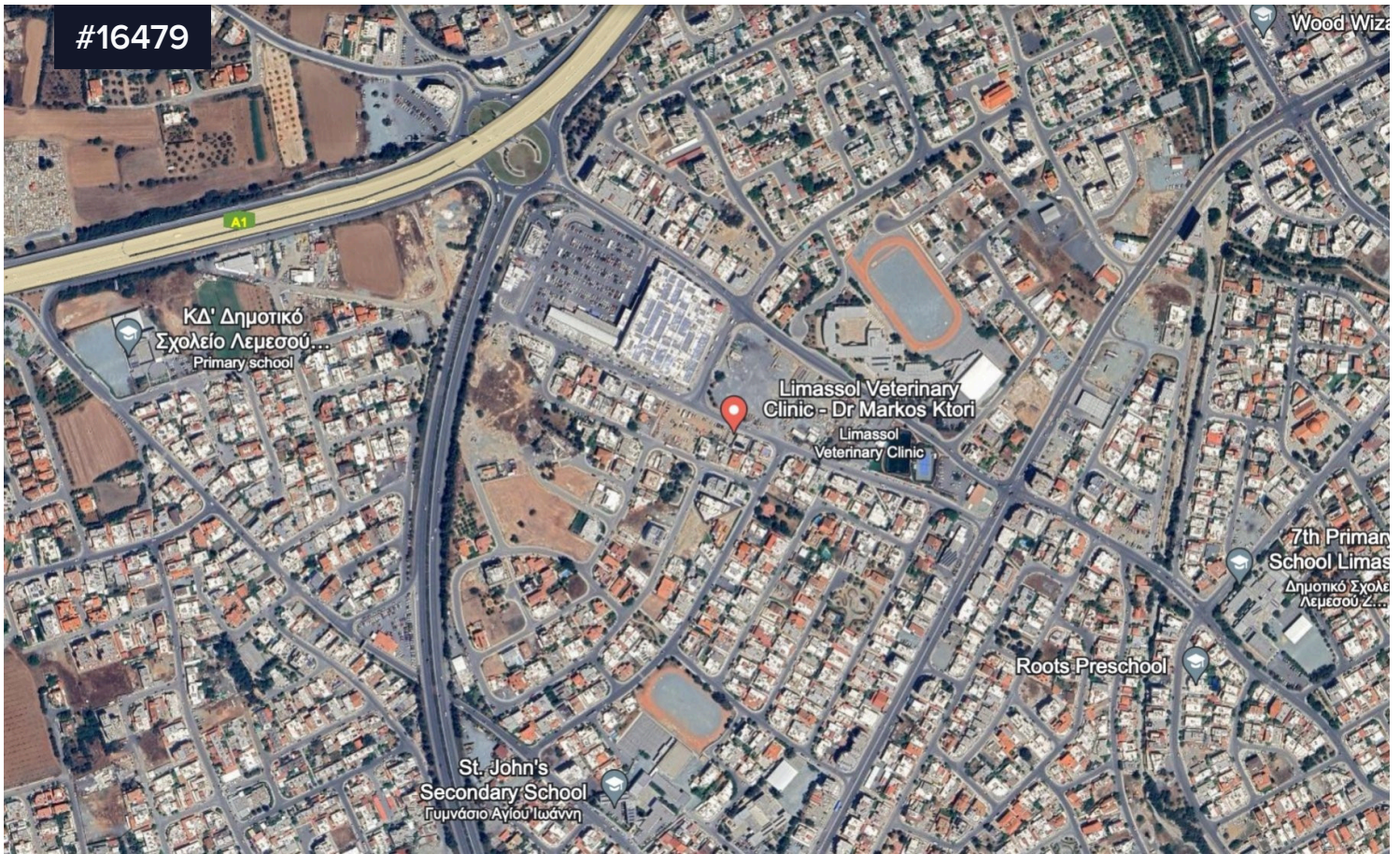


#16479



Residential Land of 943sqm in Kato Polemidia close to Sklavenitis, Schools and Amenities

€650,000

 Kato Polemidia, Limassol

Area

 **943 m²**

Residential Land of 943sqm located in Kato Polemidia, close to Sklavenitis Supermarket.

This large piece of land, is suitable for the construction of a 3 storey Apartment block, with a 100% building density ,50% cover, 13.5 metres and 3 floors allowance. Situated close to a plethora of shops and local amenities, easy access to the highway, and just a 5-10 minutes to the new casino resort, new port and My Mall.

Type

Development Land

Title deed

Yes

