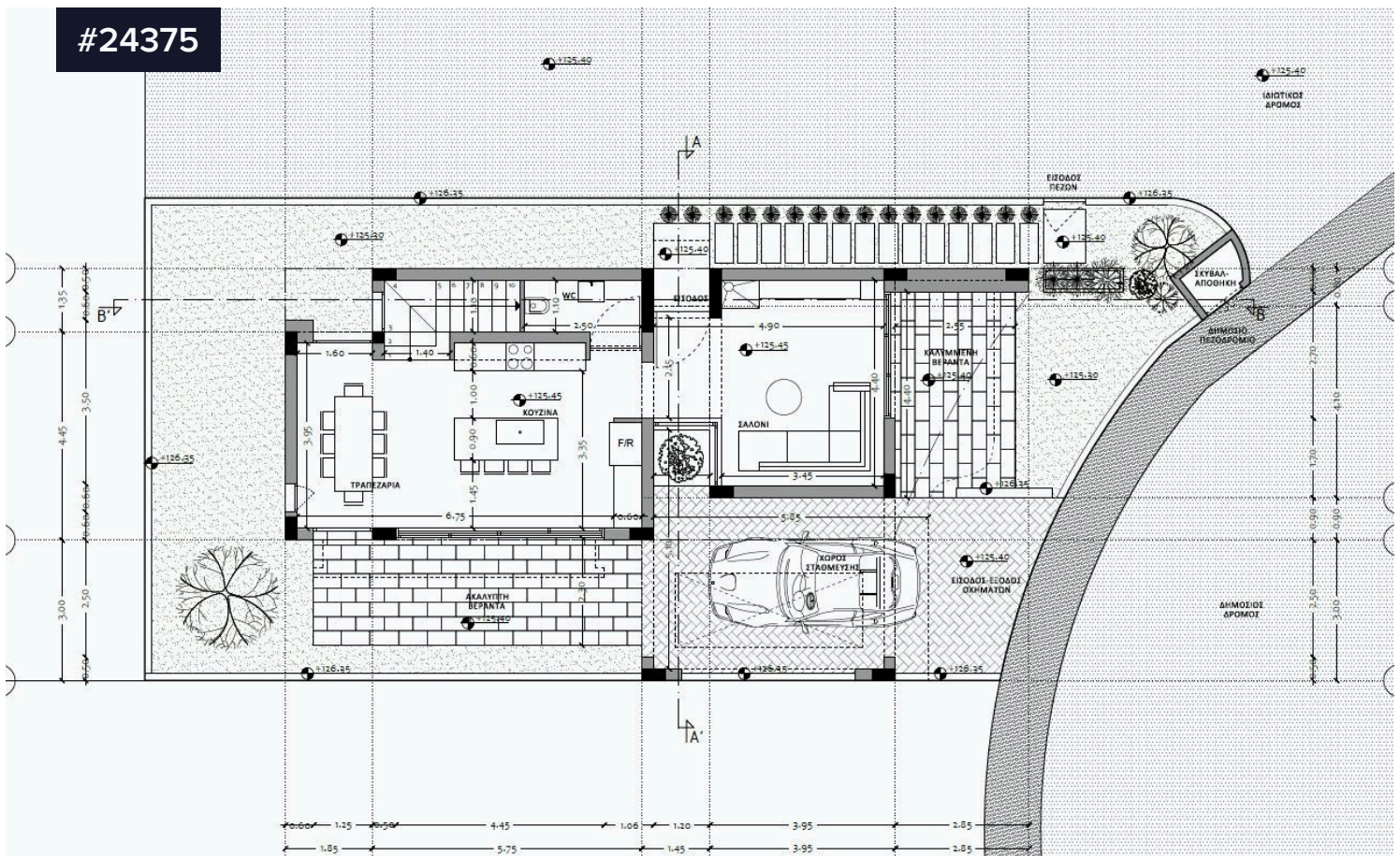


#24375



Brand New-Three Bedroom Detached House in Palodeia Area

€420,000 +VAT

 Palodeia, Limassol

Bedrooms

 3

Bathrooms

 1

Covered

 136.4 m²

We are happy to present you a brand new three bedroom detached house in Palodeia area. The house will be sitting on a plot of 213sqm and will have an internal area of 136.4sqm plus 22.35sqm covered veranda plus 15.55sqm uncovered veranda. On the ground floor, the house has its open plan kitchen with living room and dining area and a guest wc. The corridor of the main entrance as you are entering the house, is separating the living room from the kitchen and the dining area. Outside the living room and the kitchen, the house has two large verandas, one covered and one uncovered that you can have access through big sliding windows, one in the front side and one in the back side of the house. On the first floor you can find the three big

Type	Detached House
Plot	213 m ²
Status	Under construction
Year of construction	2024
Energy efficiency rating	 A

