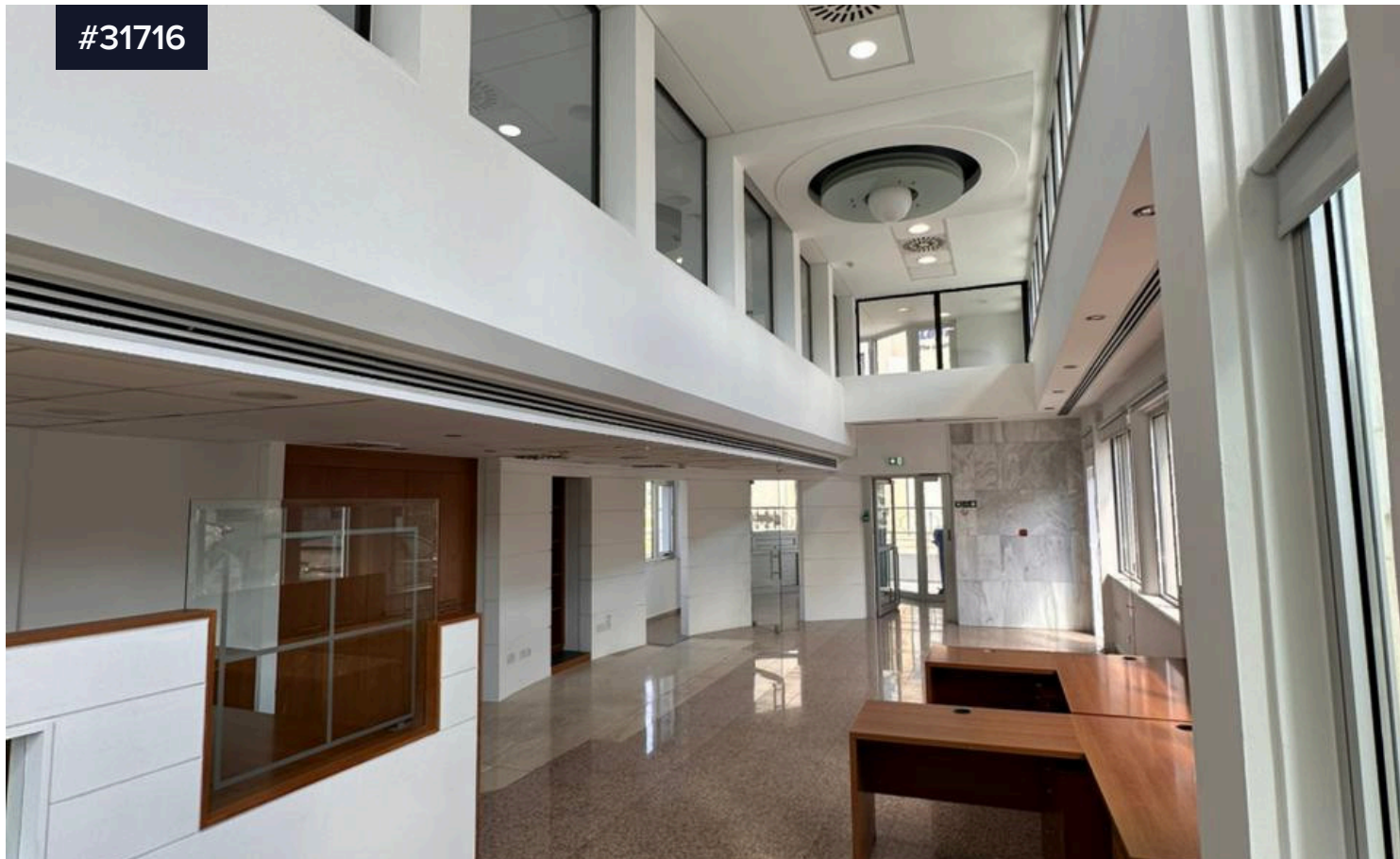


#31716



Offices Building for Rent in Central Paphos – 1,250 m² Commercial Space with Parking and Sea Views

€20,000 /month

 Pafos, Paphos

Total covered area


 **1250 m²**

Welcome to the commercial Offices Building, a fully renovated landmark commercial property available for rent in the very heart of Old Town, Paphos.

This impressive building combines modern functionality with timeless architecture, offering 1,250 m² of flexible internal space and an additional 250 m² of covered parking — ideal for a corporate headquarters, financial institution, or flagship showroom.

Type **Commercial Building**

Status **Used**

Energy efficiency rating  **Certificate expected**

