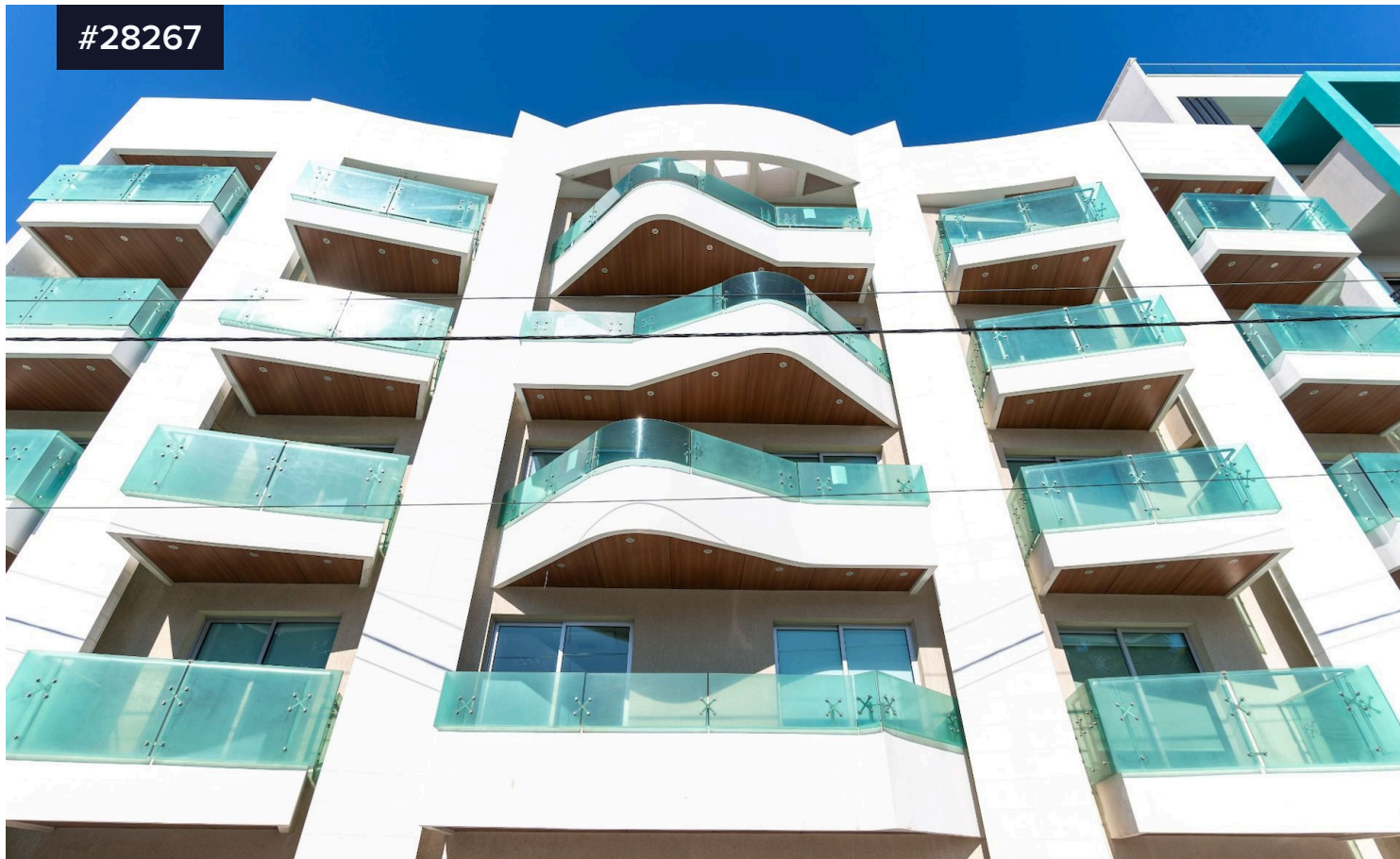


#28267



OUTSTANDING OFFICE BUILDING IN THE HEART OF THE HISTORICAL TOWN OFFERING 1,967SQM INTERNAL AREA AND 26 PARKING SPACES

€65,000 +VAT /month

 Katholiki, Limassol

Total covered area


 **1967 m²**

2 underground floors

Level 2: has 8 covered parking spots and storage.

Level 1: 7 covered parking spots and toilet facilities.

Ground level: central entrance, 2 elevators, staircase, 11 covered parking spots.

Type	Commercial Building
Status	Used
Year of construction	2015
Energy efficiency rating	 A

