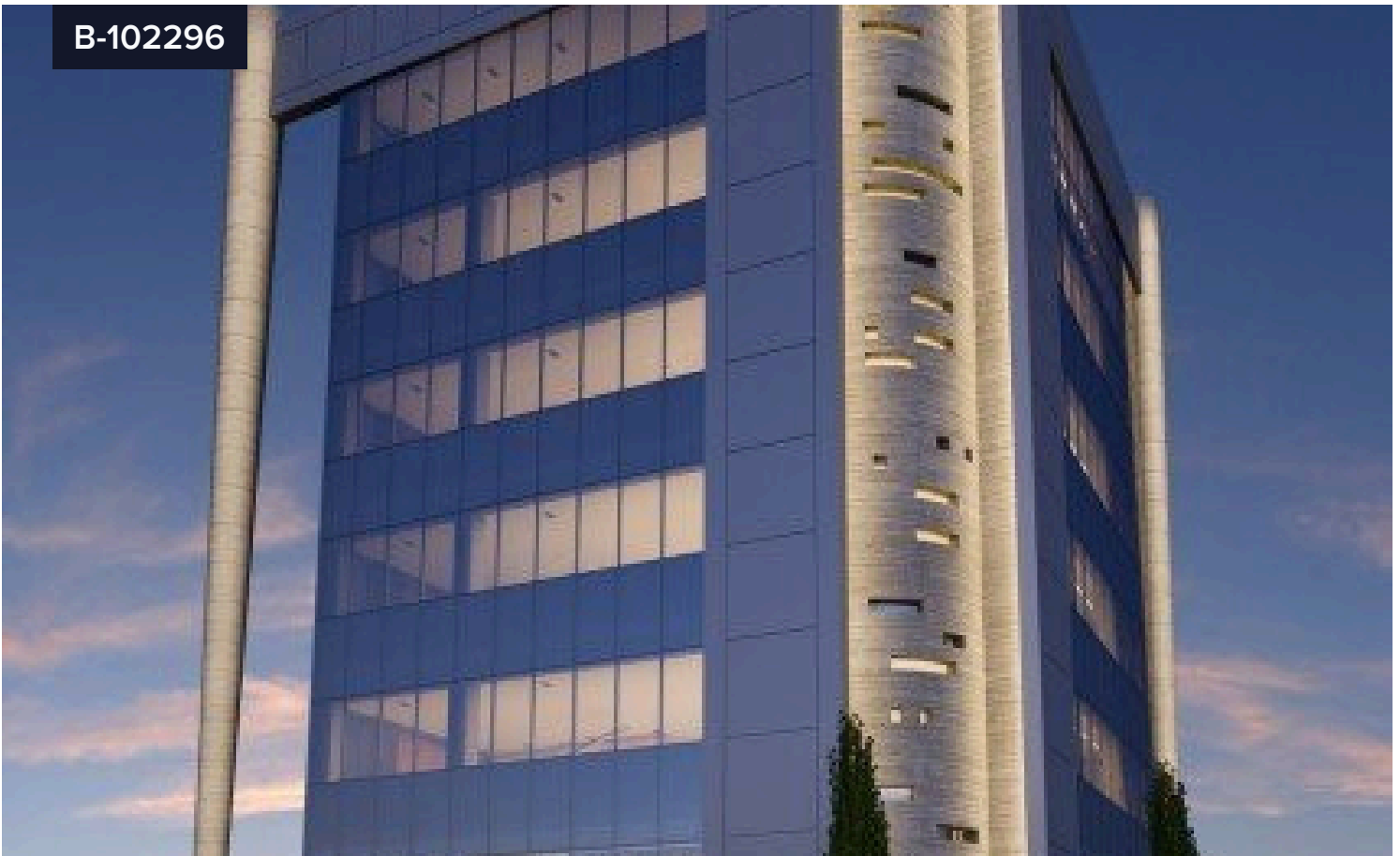


B-102296



Building For Sale In Katholiki Limassol Cyprus

€6,300,000 ^{+VAT}

 Katholiki, Limassol

Covered

 **1835 m²**

This Off Plan innovative building has a great and bold architectural design, whilst using the latest technology and having energy-efficient low running costs, offers a secure environment and a truly inspiring workplace. Typical floor plates are designed for maximum flexibility and adaptability to open floors, split spaces, creating reception areas and connecting floors seamlessly, makes this building a landmark in central Limassol.

| | |
|------------|----------------------------|
| Type | Commercial Building |
| Plot | 728 m² |
| Status | Off plan |
| Title deed | Land |

