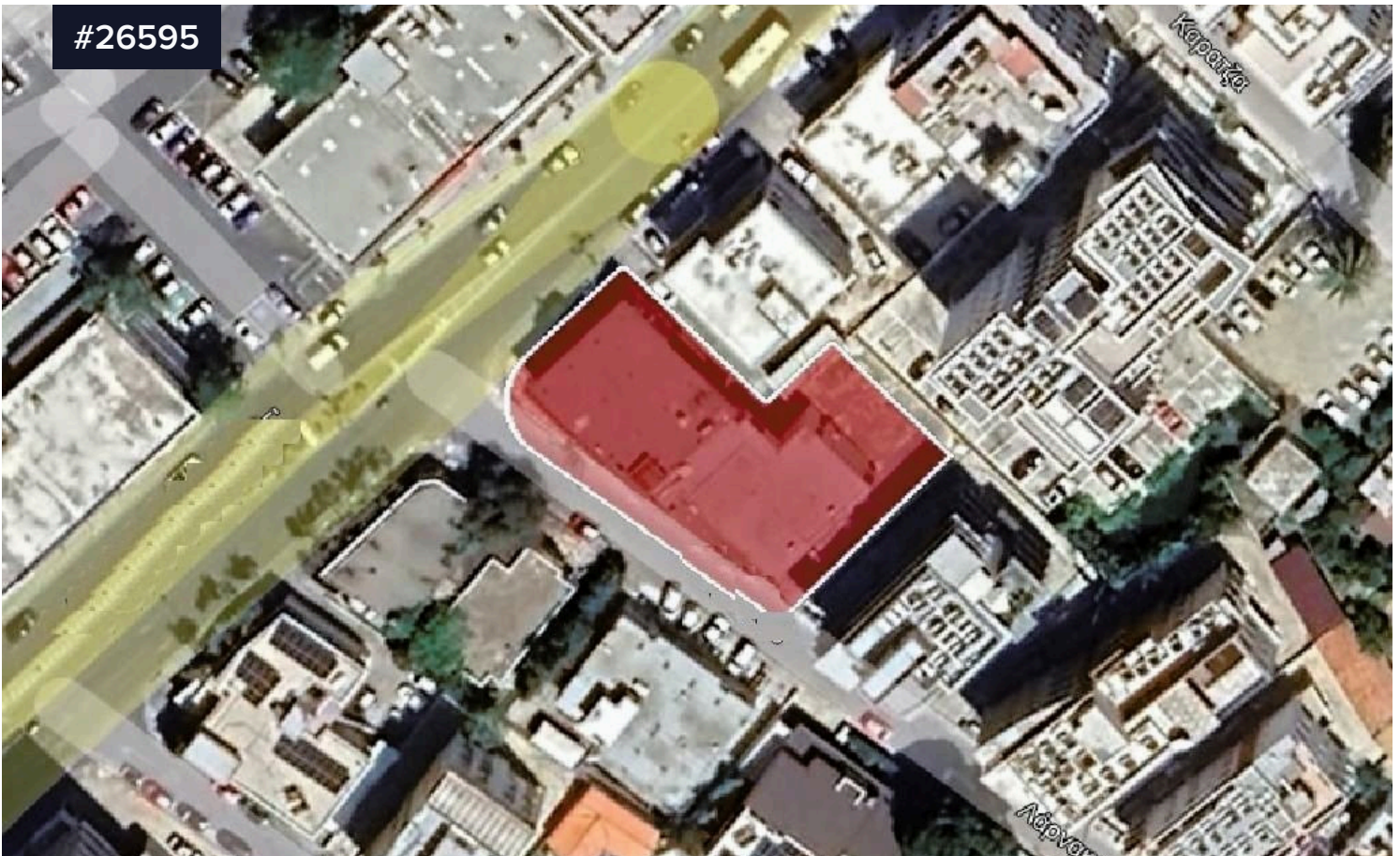


#26595



## Commercial building for sale in Katholiki, Limassol €2,500,000

 Katholiki, Limassol

Covered

 **559 m<sup>2</sup>**

Unique investment opportunity in a commercial building, located in a prime location in Katholiki area, in Limassol Municipality.

It is ideally situated in an excellent location close to an abundance of amenities and services. It enjoys very good accessibility to the Limassol City Center and the motorway. It is located within Limassol's city center and 1.8km (approx.) north from Limassol Marina.

The building was originally constructed in 1968. The area of the building is 559m<sup>2</sup> (approx.) on the ground floor, 386m<sup>2</sup> (approx.) mezzanine and 1,062m<sup>2</sup> (approx.) basement. The land area is 1156 m<sup>2</sup>.

Type	<b>Commercial Building</b>
Plot	<b>1156 m<sup>2</sup></b>
Status	<b>Resale</b>
Year of construction	<b>1968</b>
Title deed	<b>Yes</b>
Energy efficiency rating	 <b>Exempt</b>

