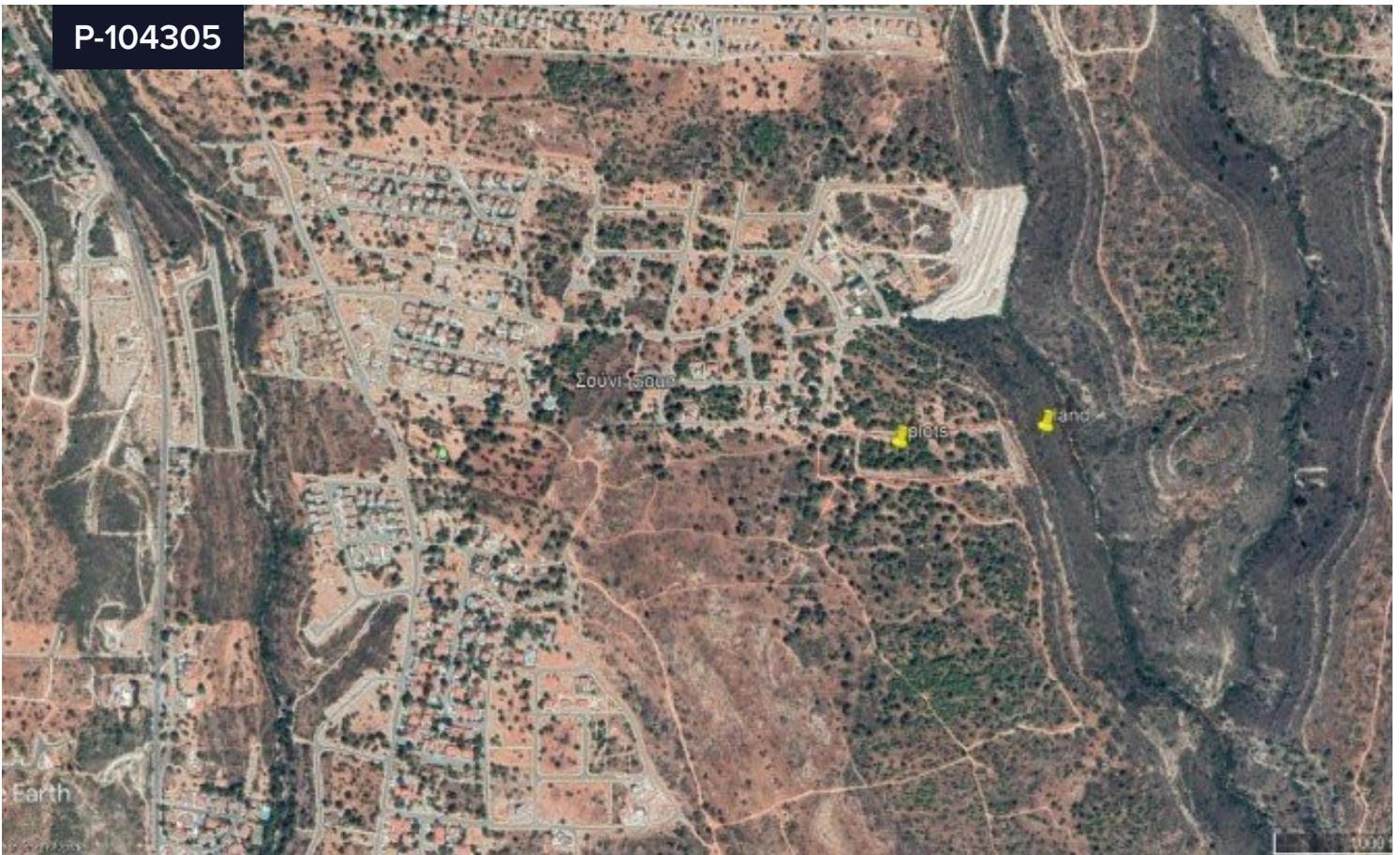


P-104305



Plot For Sale In Souni Zanakia Limassol Cyprus

€175,000 ^{+VAT}

 Souni-Zanakia, Limassol

Area

 698 m²

Souni / Zanatzia is a quaint historic village at an altitude of about 400 meters. Located 10 minutes from the ancient Curium beach and 20 minutes from the center of Limassol. The climate here is said to be probably the best you can find in all the province of Limassol (No humidity) . Characteristic of the region `s rich vegetation and especially pines along with olive and carob and wild oaks create a wonderful breathtaking scenery .The plot is located in the heart of the forest .There is direct access to all the facilities such as water and electricity .The plot is in a newly built residential area. Allowing for 20% build cover 20% up to 2 floors is suitable for residential use. The plot has access to all utilities. Living in the forest, 10 minutes from the sea, 10

Type

Building Plot

Title deed

Yes

