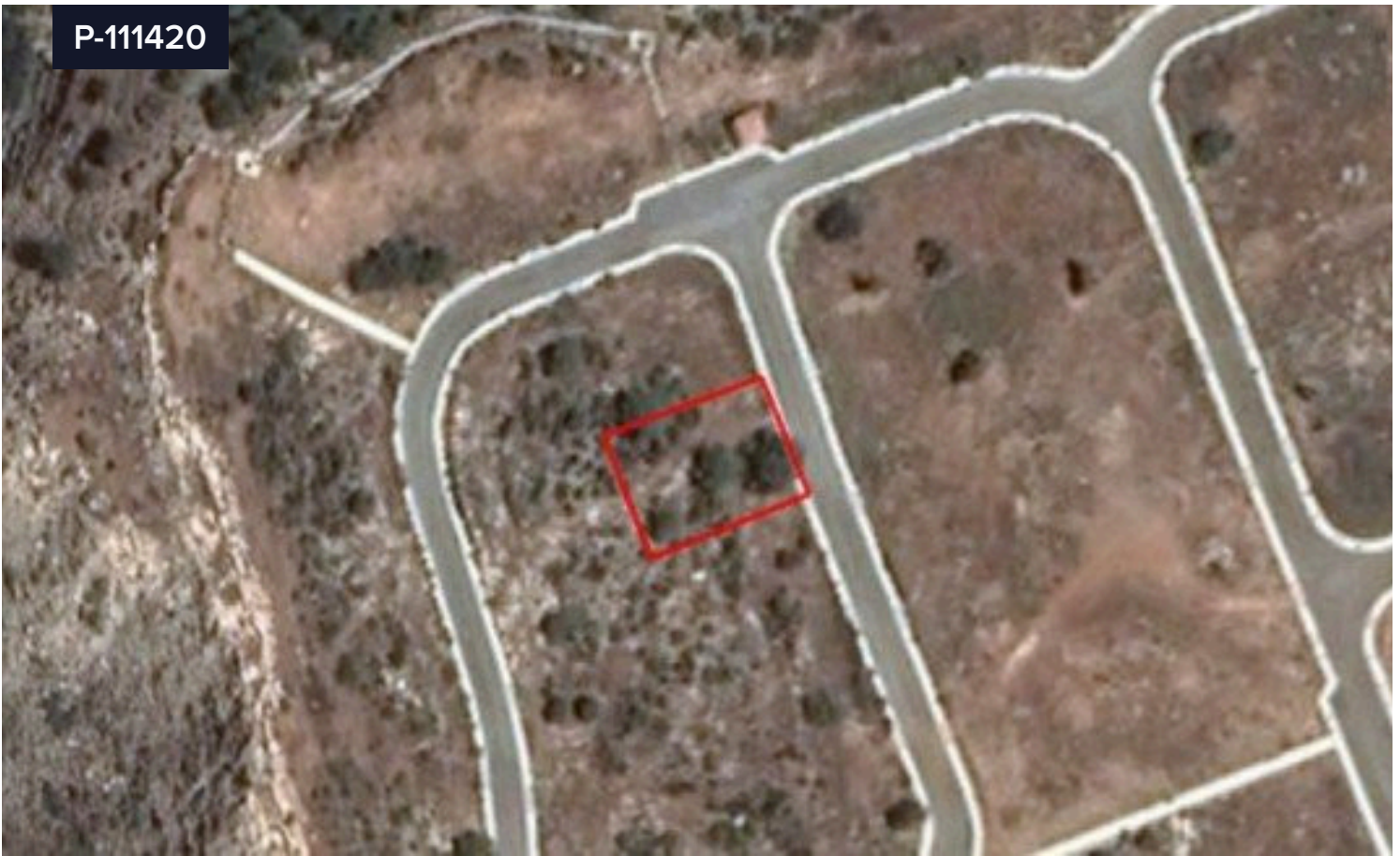



P-111420



Plot For Sale In Pissouri Limassol Cyprus

€121,500 ^{+VAT}

 Pissouri, Limassol

Area

 **784 m²**

Available residential plot in Pissouri village, in Limassol. The plot has an area of 784sqm and benefits from a frontage along a registered road. The immediate area comprises of residential developments and undeveloped parcels of land. It is covered by all utility services (water, electricity and telecommunication). It falls within residential planning zone H6 with 20% building density, 20% coverage, in 2 floors and a maximum height of 8,3m. THE PRICE IS SUBJECT TO VAT.

Type

Building Plot

Title deed

Yes

