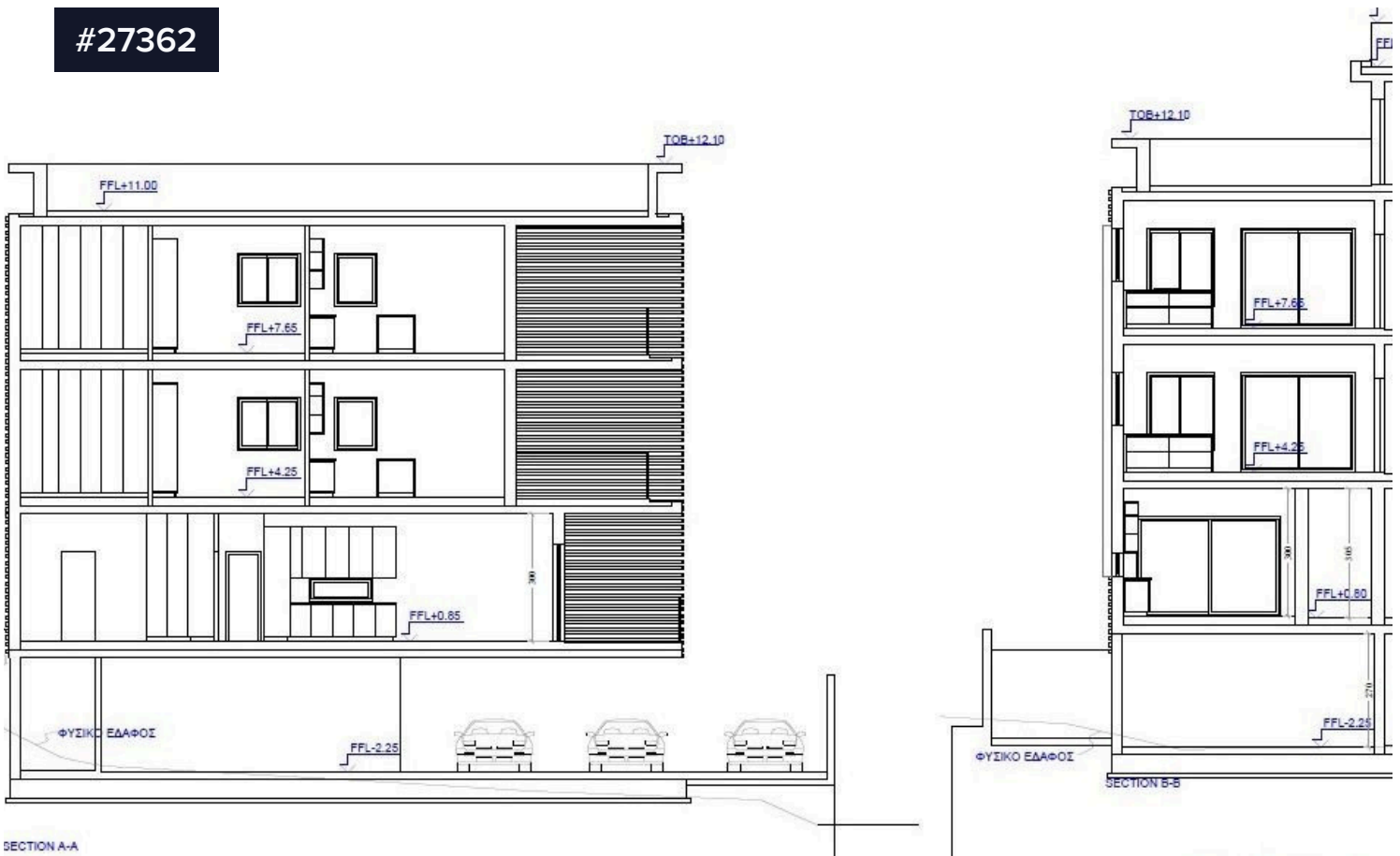


#27362



Plot with Planning License for Residential Building in Columbia, Germasogeia

€325,000 +VAT

 Columbia, Limassol

Area

 225 m²

An excellent opportunity to acquire a 1/2 share of a 225 sq.m. plot in the highly sought-after Columbia area of Germasogeia. With a division agreement and planning license for a residential building, the property offers a 100% building density, making it ideal for modern development in a tranquil yet convenient location.

The approved architectural plans include:

Basement: Underground parking for residents.

Ground Floor, 1st Floor, and 2nd Floor: Each level features a thoughtfully designed 2-bedroom apartment, with a guest toilet,

Type

Building Plot

Title deed

Yes

