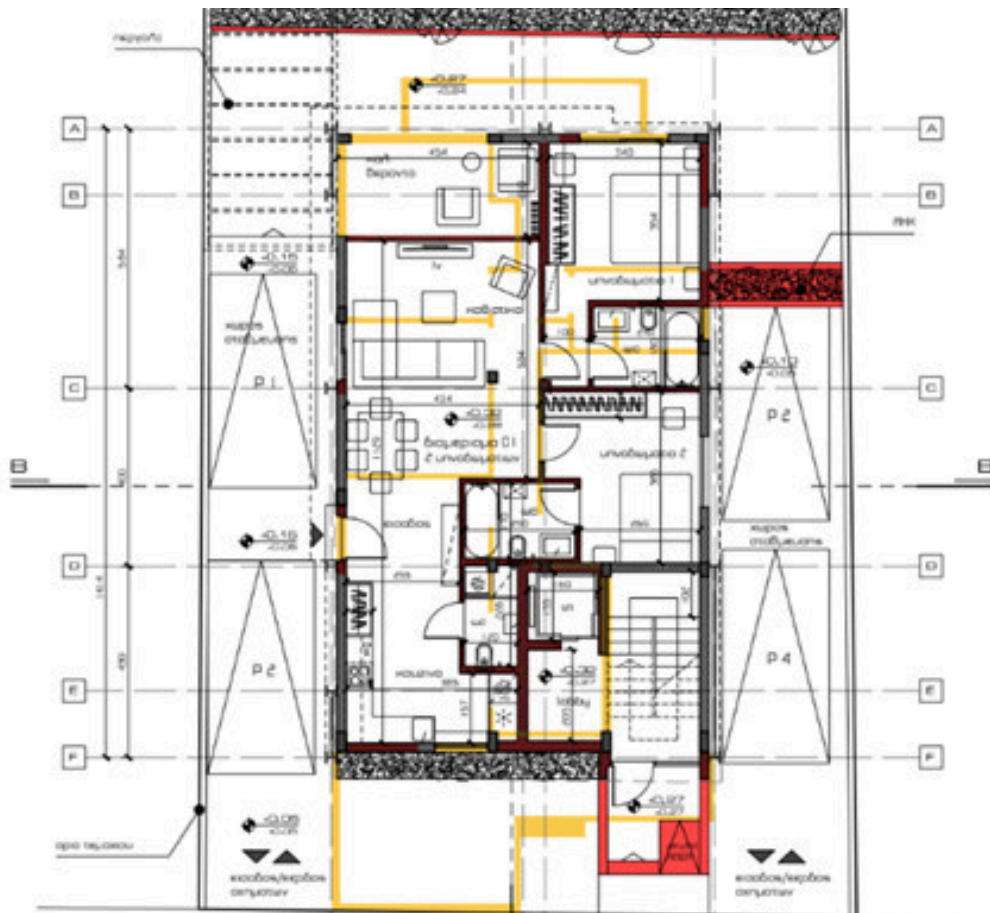


#32266



Plot for Sale in Petrou & Pavlou – Prime Location for Development

€430,000

📍 Apostolou Petrou & Pavlou, Limassol

Area

📏 300 m²

Type

Building Plot

This excellent plot, located in the sought-after Petrou & Pavlou area, offers a prime opportunity for real estate development. With a plot size of 300m² and a total covered area of 430m², this property comes with approved architectural plans for a mixed-use residential project.

Key Features:

Plot Size: 300m²

