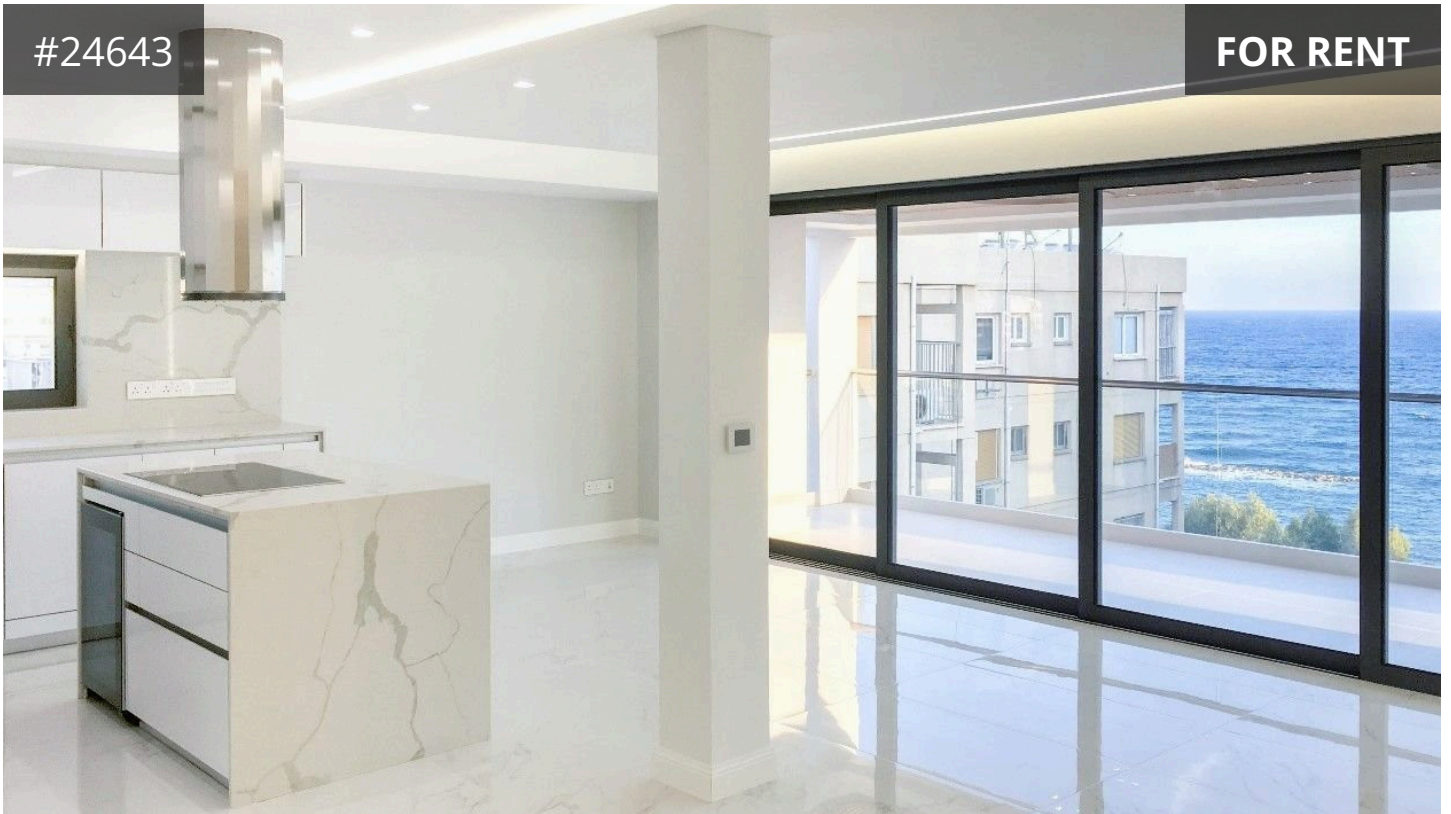


#24643

FOR RENT



Limassol, Potamos Germasogeias

132 m² Covered | 3 Bedrooms | 3 Bathrooms



Description

Luxury top floor sea view apartment, walking distance to the beach. Situated in the east area of Limassol, it is close to all amenities and offers both a relaxed and peaceful atmosphere, combined with Limassol's cosmopolitan lifestyle.

The apartment offers bespoke design, crafted with high end finishing such as marble, granite stones, real wood floors, open plan design kitchen and living-room. Includes a guest w/c, 1 master bedroom with en-suite bathroom and a large glazed walk-in closet, 2 additional double bedrooms with en-suite bathrooms, and a large outdoor veranda, accessed from the living room area via fully folding glazed doors.

- Property covered area 157m²- Property indoor area 132m²- Veranda area 25m²- Gated parking

Apartment Features:- Duct Mounted Air Conditioning- Under Floor Heating controlled through Wi-Fi- Marble Floors- Wooden Floors in Bedrooms- Integrated Lighting through out- Jacuzzi tub in the bathroom &

€4,500 /month

TYPE	Apartment
BEDROOMS	3
BATHROOMS	3
COVERED	132 m ²
STATUS	Used
ENERGY EFFICIENCY RATING	A



foxrealty.eu